



Steering Committee

Ed Feaver, Chair
Loranne Ausley, Founding Chair
Ken Armstrong
Tracey Cohen
Kristin Dozier
Laurie Dozier
Vincent Edwards
Susan Ellis
Lauren Faison
Bob Gabordi
Meade Grigg
Brooke Hallock
Shonda Knight
Eric Miller
Bev Owens
Lori Danello Roberts
Angel Trejo
Kathy Waleko

Help Keep Us Current

Please go to the Resource Guide on the [Whole Child Leon website](#) and make sure information about your program is current. Please email [Heather](#) with any updates or corrections. Make sure to send us a list of upcoming events and meetings for our calendar!

Whole Child Advisors

Check for service requests on a regular basis: you may

Community Update July 2011

Thank You and Welcome

Thank you to **Nina Ashenafi Richardson, Robin Johnston** and **Serena Moyle** for their commitment to area children and families through their dedicated service as Whole Child Leon Steering Committee Members. Nina, Robin, and Serena have finished their terms as Steering Committee members and we are grateful for their service.

Welcome to new Steering Committee Members: **Tracey Cohen, Vincent Edwards, Susan Ellis, Meade Grigg, Brooke Hallock, Shonda Knight, Eric Miller and Kathy Waleko.**



June's Guest Speakers:

- **Tammy McKenzie**, Progressive Pediatric Development Center, spoke about new developments in her program including a new full day program for 12-13 year olds.
- **Patricia Evans and Ramsey Sims**, Capital City Bank Foundation, the Foundation has started awarding smaller grants to more organizations and applications are due April 1st and October 1st of each year. The Tipping Point grants are awarded to agencies who need an extra push to accomplish a big goal. Applications for the Tipping Point grant are due November 1st. For more information, contact Patricia Evans at 402-7780, or go to the [Foundation](#) website.

Our next Professional Network meeting is Monday, July 25th at Noon.

not always receive email notification. Please feel free to contact us if you need additional assistance or information.

Contact Heather at 850-414-8344 or htelfer@uwbb.org for assistance.

WCL'S QR CODE

Scan to stay in touch with Whole Child Leon.



To use the code:

1. Make sure you have a smartphone (Android, iPhone, etc.)
2. Take a picture of the code.
3. Make sure you have a QR scanner/decoder. If you don't, there is an App in the Market of all smartphones called **Barcode Scanner**.
4. Once the picture is taken, decode it with the App of your choice.

WCL/LCS KidCare Outreach Project

Summer break is here but Leon County Schools will not stop reminding parents about Florida KidCare and how important it is for our students to remain healthy

Guest Speakers Include:

- Kelly Otte & Monica Horton, PACE Center for Girls
- Theresa Flury, Boys & Girls Clubs of the Big Bend

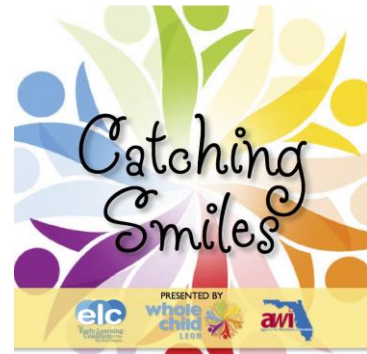
Email [Heather](#) if you would like to be added to the Professional Network invitation list.

"Catching Smiles" CD Re-released

Thanks to support from Early Learning Coalition of the Big Bend and Agency for Workforce Innovation, Whole Child Leon is happy to announce that "Catching Smiles" will soon be re-released to our community.

Thank you to all of the artists who donated their time and music to make this CD possible.

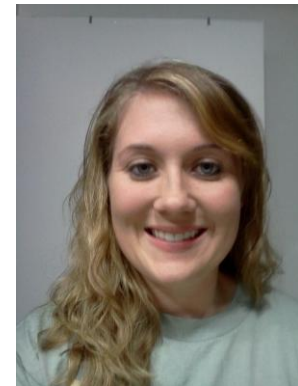
Our goal is to send each baby, born in our community, home with a new Catching Smiles CD. All of the songs on "Catching Smiles" are available for download by clicking [here](#).



Catching Smiles CD Cover

Whole Child Leon Advisor at TMH

Whole Child Leon has an advisor, Jennifer Davis, at Tallahassee Memorial HealthCare on Wednesdays helping parents of children in the NICU and Pediatric departments complete profiles and get connected to resources and services through the Whole Child Connection.



Jennifer Davis

Jennifer has helped many with families that were in need of services for their children. She has assisted many families in completing a Profile over the phone. These families had needs that included: affordable childcare for infants, housing, food, parenting classes, and assistance in obtaining a job.

throughout the summer.

Don't miss "KidCare Enrollment Days"

Morning Schedule 7:30-10:00

7/19/11 Jack McLean Community Center

7/20/11 Jake Gaither Community Center

7/21/11 Walker Ford Community Center

Afternoon Schedule 3:30-5:30pm

7/25/11 Lawrence Gregory Community Center

7/26/11 Myers Park

7/27/11 Winthrop Park

7/28/11 Forest Meadows Park

Click [here](#) for the flyer.

For additional information about Florida KidCare call the Leon County Schools Outreach Specialist at (850) 414-5110 or Florida KidCare at 1-888-540-5437 or visit

www.floridakidcare.org.

Look Who's Talking

"I've had several problems applying for Florida KidCare, however you (Jennifer Leon) have helped me tremendously and my kid's KidCare status is the least of my worries now." Laura Wells

Parkway Farmers' Market @ the Y

Whole Child Leon and the YMCA have partnered to establish a weekly Farmers' Market at the YMCA's Garden Annex, 2001 Apalachee Parkway. This

The Whole Picture of Health



A WELLNESS & NUTRITION INITIATIVE
CHART (Community Health Action Response Team)

95210 for Health!

Five daily habits can help children and adults live healthier lives and sustain a healthy body weight.

Get at least **9** hours of sleep

Eat **5** servings of fruits & veggies every day

Limit screen time to **2** hours or less

Get at least **1** hour of physical activity

Eliminate **(0)** sugary drinks and tobacco exposure

95210 is a community-wide strategy for promoting child health and life-long healthy habits for all individuals. With simple health messages behind each number, 95210 communicates key behaviors that promote healthy weight and overall good health. 95210 makes it easy to remember some of the most important steps families, community organizations and worksites can take to prevent childhood obesity and chronic diseases.

Whole Child Leon and the Community Health Action Response Team, (CHART), is working with the Early Learning Coalition and Leon County Schools to promote 95210 in 5 local childcare centers.

Whole Child Leon in the Community

Outreach

market sells fruits such as pineapple, watermelon, and mangoes; vegetables such as cucumbers, tomatoes, squash, purple young potatoes; and raw honey. All of the vegetables are organically grown.

Making sure our entire community has access to fresh, local fruits and vegetables is a challenging mission that we are addressing head on. Come and get your fresh fruits and veggies!

Wednesdays 11:00 a.m. - 2:00 p.m., 2001 Apalachee Parkway

Click [here](#) for a flier.

Upcoming Events

Community Action Team Meeting

Circuit-wide meeting will be Friday, July 29th at 11:00am - 12:30pm at the Early Learning Coalition, 1940 N. Monroe Street, Suite 70. This meeting will feature a panel discussion on Family Violence.

Panelists include: Meg Baldwin, Refuge House; Brady Carlson, FCADV; Necia Little, DCF; Gwen Williams, Victim Advocate - Leon County Sheriff's Office;

GaP (Grandparents as Parents) Back to School Expo

Saturday, August 13
10:30am - 1:30pm
Tallahassee Senior Center
1400 N. Monroe Street
2nd Floor Auditorium



Jennifer Davis at the Family Health Fair at Neighborhood Health Services

Whole Child Florida State Conference

Whole Child Leon was asked to lead a presentation and discussion on "Community Engagement" at the 2011 state conference.



Rhea Chiles and Whole Child Tri-County Executive Director Donna Hagan

CACAA New Foreclosure Prevention Program



Capital Area Community Action Agency is starting a new foreclosure prevention program. For more information, please call 222-2043 or go to www.cacaainc.org.

WCL Offices



Thank you to WCL staffer Amanda Clements for her new art work, recently installed in the WCL offices.

We're on the Web!

The [Whole Child Leon Online Event Calendar](#) gives information on a wide array of local events for kids and for people who work with kids.

If you have news you would like to share, [email it](#) and we'll make sure it gets onto the WCL Website in the Community News section or the Event Calendar.

Find us on Facebook 

Follow us on 



DCF - Emergency Financial Assistance for Housing Program

The Emergency Financial Assistance for Housing Program will begin accepting applications for assistance with overdue rent or mortgage payments, or for deposit assistance, after 8:00 a.m. on Monday July 11th (Please do not send applications before July 11th).

You may call 1-877-891-6445 to have an application mailed or faxed to you. Applications and vendor agreements are available for download at www.dcf.state.fl.us/programs/homelessness/efahp.shtml.

Completed applications and vendor agreements may be faxed to 1-850-921-2559 or mailed to:

Department of Children and Families
Office on Homelessness - PDHO
1317 Winewood Blvd.
Tallahassee, FL 32399-0700



Is Your Child Starting Kindergarten in the Fall?

Be on the lookout for the "Kindergarten Parent Input Survey". This survey is designed to make your child's transition into Kindergarten easy and successful. It will also help your child's new school make the most appropriate class placement. The Kindergarten Parent Input Survey offers parents an opportunity to point out their child's developmental strengths and weaknesses and describe how their child reacts to different situations. The rising kindergartener is also asked to participate by drawing a picture of themselves for their new teacher.

Surveys will be distributed through VPK sites and will also be available for download from www.wholechildleon.org/The-6-Dimensions/Quality-Education. Completed surveys will be collected at VPK sites or can be sent to your child's new school by July 31, 2011.

Whole Child Leon is currently focused upon three key areas impacting young children:

- Children are Healthy at Age 1





- Children are Making Appropriate Progress
- Children are Entering Kindergarten Ready to Learn

The Quality Education Action Team of Whole Child Leon created the Kindergarten Parent Input Form as part of their focus on helping children enter kindergarten ready to learn. The Quality Education Action Team will continue tracking how many forms are returned. This is the second year of this initiative and the feedback from the first year suggests that teachers and principals are very happy to have this information before the start to the new school year.

Click [here](#) to download a survey. Click [here](#) to download Kindergarten Readiness Expectations.

Exploring Music

Have you ever noticed how your child's eyes light up when you play or sing a favorite song? That's because music is much more than just something fun to listen to. A hefty stack of research shows that music helps spark memory, imagination, language skills, and reasoning ability. Music, combined with movement, help children learn balance, coordination, body awareness and rhythm. But enough about science! Music is a great way for your child to bond with YOU! Having fun together is one of music's greatest perks.

These tips will help you make music a part of your family's life:

Let your child explore. Little ones won't be able to keep a beat or sing right away. Don't worry! Let her do her thing and enjoy what she's hearing. Percussion instruments are easy for little hands to grasp, shake, and tap. Maracas, tambourines, and small drums are perfect, but so are pots and pans.

Be spontaneous. Little kids need little encouragement to break into song, and you shouldn't either. Sing "Good Morning to You" to the tune of "Happy Birthday," narrate bath-time preparations in an operatic voice, and make up Rock songs about the dog.

Use Music to Teach

Songs help children learn to spell ("B-I-N-G-O"), name the parts of their body ("Head, shoulders, knees, and toes"), count ("Five Little Monkeys"), and even speak new languages ("Frere Jacques").

Make music accessible. Keep CD players or iPod docks in the kitchen, living room, and your child's room. Don't limit your child to just one kind of music. Play what you love in addition to the songs

meant for kids.

Whole Child Leon presented "Catching Smiles" to the community in October 2007. "Catching Smiles" features the music of many talented local musicians who generously donated their songs to produce a CD filled with a beautiful collection of music that helps children feel good about themselves and the world around them. Thanks to the Early Learning Coalition of the Big Bend and the Agency for Workforce Innovation, "Catching Smiles" will be available in the community once again. You can get your copy when you see Whole Child Leon out in the community or you can download the songs at www.wholechildleon.org/Catching-Smiles-CD.

Whole Child Leon is building a community where everyone works together to make sure children thrive. Visit www.wholechildleon.org today to learn more.

Whole Child Leon Staff

Courtney Atkins, Executive Director

Heather Telfer, Connection and Outreach Coordinator

Amanda Clements, Vice-President of Strategic Initiatives, United Way of the Big Bend

Megan Earnhardt, Strategic Initiatives Associate, United Way of the Big Bend

Jennifer Leon, Whole Child Leon/Leon County Schools KidCare Outreach Specialist

Got Kids? Get connected to community resources that can assist you and your family at the Whole Child Connection.

www.WholeChildLeon.org

Contact a Whole Child Leon Advisor today, at 850-414-8344.



Whole Child Leon
2813 S. Meridian Street
Tallahassee, FL 32301
850.414.8344
www.WholeChildLeon.org

Copyright © 2009 Whole Child Leon